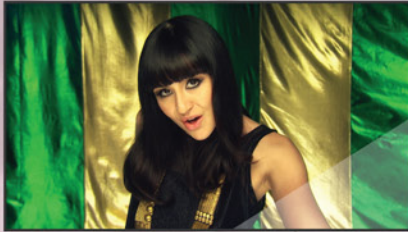
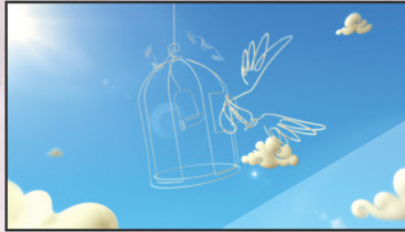




[ON-SET . COLOUR . VFX . CUT . DELIVER]



ROGUE TRADERS



TELSTRA



FOX SPORTS

FSM is committed to the world of Stereoscopic 3D (S3D) with productions already completed in music, commercials and broadcast design.

When we shoot normally we use one camera, one lens and can't convey a true spatial perception or depth. It's a flat picture.

S3D is created using two cameras simultaneously recording the same subject. In simple terms each camera represents the human eye. By taking two cameras and mounting them on a common chassis or rig you are now imitating the human eyes. And that creates an image which has true depth or 3D.

When these images are played back or projected and viewed with 3D glasses they are fused by the brain into a single image with the appearance of depth.

The latest technology uses digital projection or 3D LCD monitors with either passive polarized glasses or active shutter glasses. 3D can also be displayed using the older and less appealing anaglyph glasses that are typically red-cyan.

Passive or active create a far more successful 3D experience and are now more common than the older style anaglyph. Anaglyphs only advantage is there is no need for special monitoring or screens – it can work with any type of display, for instance on YouTube.

S3D is shot using data or HD based cameras because the organic nature of film and film processing cannot guarantee perfect alignment between two film cameras. RED, SI-2K, Phantom and various HD cameras are commonly used with more available all the time.

For more information or a demo, please call 612 8966 5000 or email S3D@fsm.com.au


ANAGLYPH

The original style of glasses for viewing 3D, anaglyph glasses can be used without special screens or projectors but the results are not nearly as successful as the newer technologies.

Anaglyphs are still or moving pictures where the red and blue channels have been split and then reassembled so that the image appears three-dimensional when viewed through 3D glasses with red and cyan lenses.


PASSIVE POLARIZED

These are the type in Australian cinemas using the RealD 3D system.

Two images are projected onto the same screen through different polarizing filters. The viewer wears low-cost glasses that contain a pair of different polarizing filters. As the filter passes only that light each eye sees a different image. This is used to produce a 3D effect by projecting the same scene into both eyes, but depicted from slightly different perspectives.


ACTIVE SHUTTER

These are the type sold with 3D LCDs in Australian retailers.

Shutter glasses are the most commonly used Active 3D glasses with the lenses actually small LCD screens. When turned on, the lens darkens and the "shutters" close. This is synced with the screen displaying the 3D content. As each different image is flashed the eye shutters alternate in time. Each eye sees a slightly different angle of the same image creating the 3D effect.

COMMON S3D CHASSIS OR RIG


Stereoscopic 3D Rigs / Mounts using Panasonic, Sony and RED cameras and recorders

